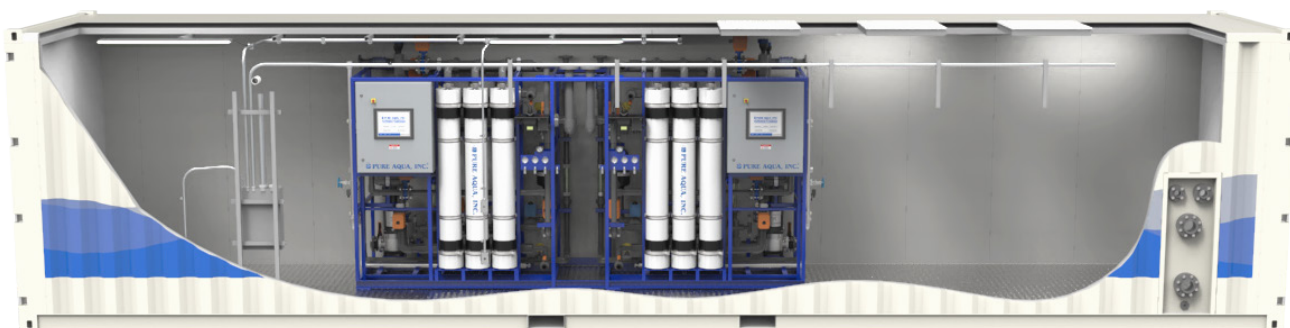


Containerized Ultrafiltration Systems

10ft, 20ft and 40ft Containers

CUF
SERIES

Pure Aqua's containerized ultrafiltration systems are self contained, turnkey units that can function on-the-go or as a permanent water treatment plant, able to start producing high-quality water in less than a day after arrival on-site. Pure Aqua's containerized ultrafiltration systems are made to order, meaning that your containerized system will be specifically engineered to meet your water treatment requirements. Each containerized ultrafiltration system is engineered with high-quality components to handle all types of harsh conditions.



2 x 50 GPM containerized ultrafiltration system in one 40ft container

Pure Aqua supplies a full line of standard and fully customizable water treatment systems, all of which are engineered using advanced 3D computer modeling and process design software.



50 GPM ultrafiltration system



Integrated clean-in-place skid (CIP)

Standard Features

- 20ft or 40ft standard shipping container
- Centralized external connections
- Interconnecting piping and wiring
- Overhead lighting
- 110V/460V/3ph/60Hz power supply
- Pretreatment mounting and plumbing
- Centralized control panel
- Operation and maintenance manual
- Full 3D/2D CAD drawings

*For more information, please
refer to our UF data sheets*

Available Options

- 10ft standard non seaworthy container
- Air conditioning/heater unit
- Clean-in-place skid (CIP)
- 380-415V/3ph/50Hz power supply
- 220V/3ph/60Hz power supply
- Chemical dosing systems (CEB 1, 2, 3)
- Diamond plate flooring
- Insulation for temperature control
- Personnel man door



Containerized
ultrafiltration system 10ft

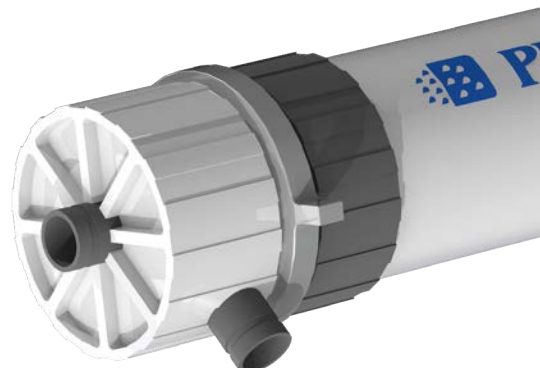
Containerized Ultrafiltration Systems

10ft, 20ft and 40ft Containers

CUF
SERIES

Ultrafiltration Module

The modules are built with a robust outside-in PVDF fiber technology. The hollow fibers feature high clean-ability, low chemical consumption, high recovery, and a superior combination of mechanical properties and chemical resistance. These modules are certified under NSF/ANSI Standard 61 for safe use in drinking water applications.



2 x 50 GPM containerized ultrafiltration system
in one 40ft container

Operation Specifications

- Max. feed water temperature: 40°C
- Feed water pressure: 20 to 30 psi
- Operating pressure: 30 to 70 psi
- Backwash frequency 20-60 minutes
- TOC < 10 max. < 40 mg/L
- Turbidity < 50 max. 300 NTU
- Cl₂ 0.5 ppm (2,000 cleaning)
- COD max. < 60 mg/L

Weights and Dimensions

Container Specification	Non Insulated Container			Insulated Container	
	10ft	20ft	40ft	20ft	40ft
External length (in)	120	240	480	240	480
External width (in)	96	96	96	96	96
External height (in)	102	102	114	102	114
Internal length (in)	111	233	474	229	470
Internal width (in)	92	92	92	88	88
Internal height (in)	93	95	104	91	100
Tare weight (lbs)	3,200	4,800	7,300	6,500	9,400
Max shipping weight (lbs)	22,400	40,000	45,000	40,000	45,000
Access	1 double-door				

Pure Aqua also supplies: Custom Engineered Solutions, Multimedia Pretreatment, Activated Carbon Pretreatment, Water Conditioning, Chemical Dosing Systems, Ultraviolet (UV) Sterilizers and Ozonation Systems.

PURE AQUA, INC.
Water Treatment and Reverse Osmosis Systems
sales@pureaqua.com +1 (714)432-9996
www.pureaqua.com +1 (844)309-7501



Authorized Dealer: